



RAILWAY LEVEL CROSSING PROGRAMME

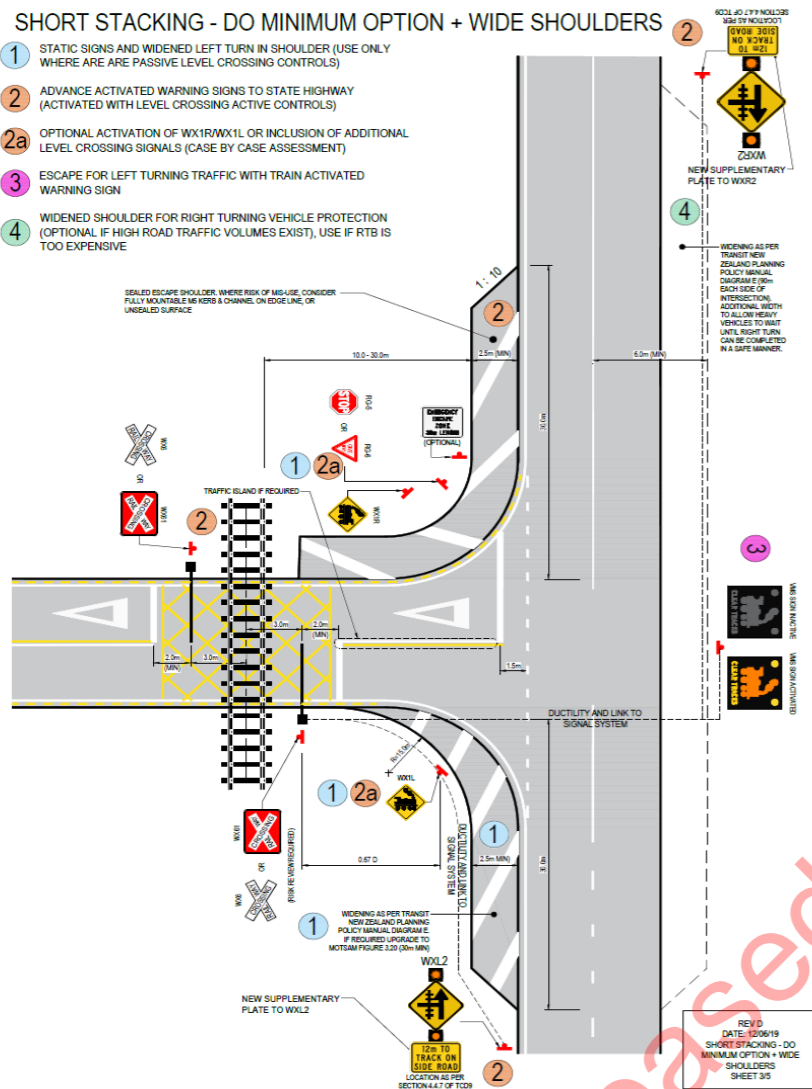
Waka Kotahi NZ Transport Agency has worked with KiwiRail during the 18-21 NLTP period to improve safety at railway level crossings on or near state highways around New Zealand.

Success

The Level Crossing Programme (LCP) has continued to deliver strongly for this NLTP period. The programme completed 36 sites in this NLTP, exceeding its goal of 34 and underspending its budget of \$26m by \$1.5m.

On top of improving safety at these sites, the team laid the groundwork for the future upgrades by completing initial assessments on a further 93 sites, completing 55 Level Crossing Safety Impact Assessments, holding a national prioritisation workshop followed by 7 detailed regional scoping workshops with the local teams from Waka Kotahi and KiwiRail. The team has also significantly designed 11 sites that were unable to proceed in the first round. This means the programme is in a strong position to continue its success if more funding is awarded.

Example of standard level crossing layout



Total safety treatments	
Flashing lights and bells	75
Half arm barriers	27
Pedestrian mazes	18
Automatic pedestrian/cycle gates	8

Stakeholder relationships

We've made significant strides in strengthening our relationship with KiwiRail. In future, we expect this momentum to continue and for this to assist greatly in effective delivery of projects.

Public response to the Level Crossing Programme has been generally positive. These improvements have significant impacts on safety but cause very little disruption to traffic or communities.

Most media coverage of the programme was from Ministerial announcements of upcoming work and affected landowners or residents were regularly communicated with and kept up to date by Waka Kotahi.

Example of standard level crossing layout

