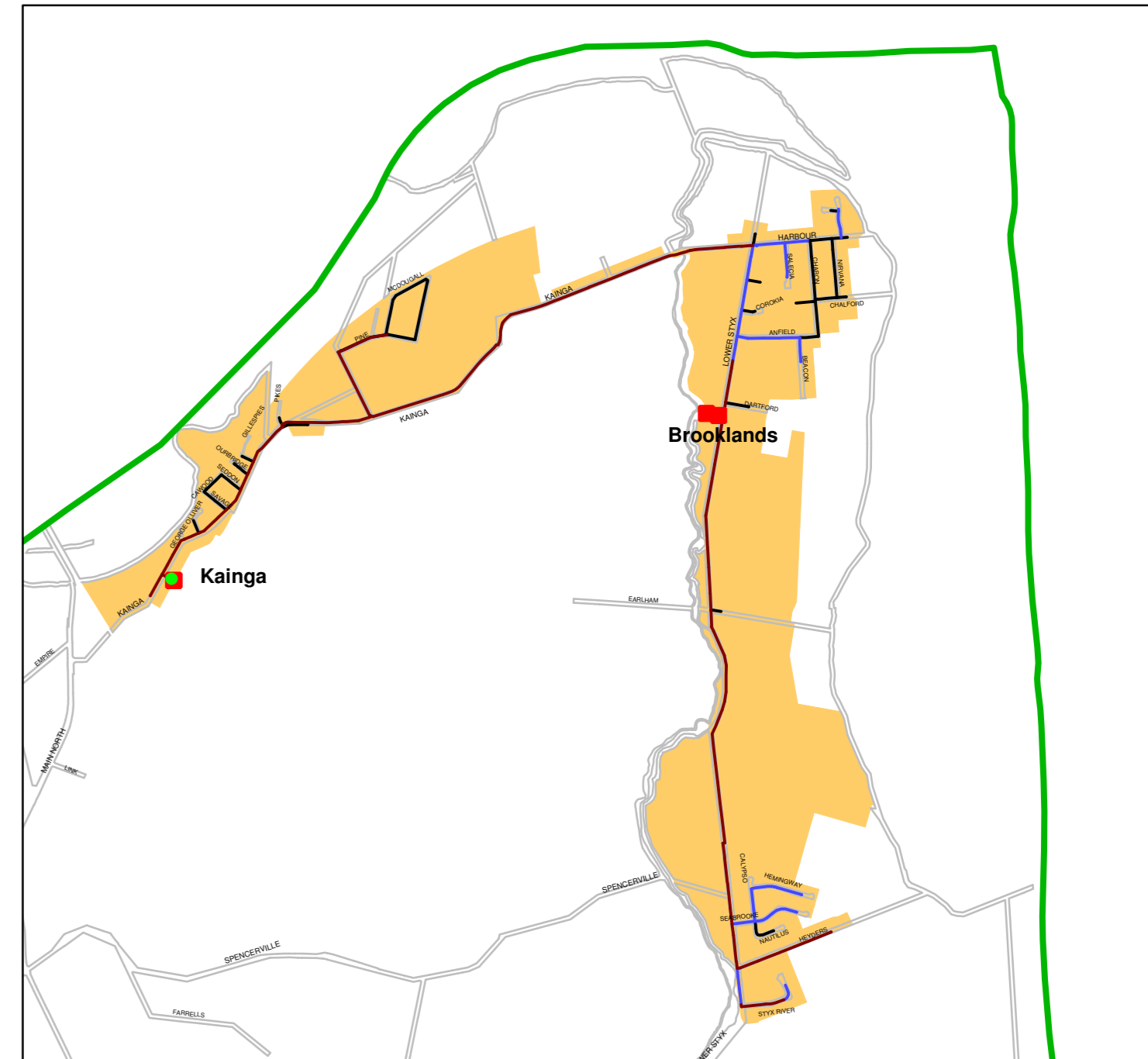
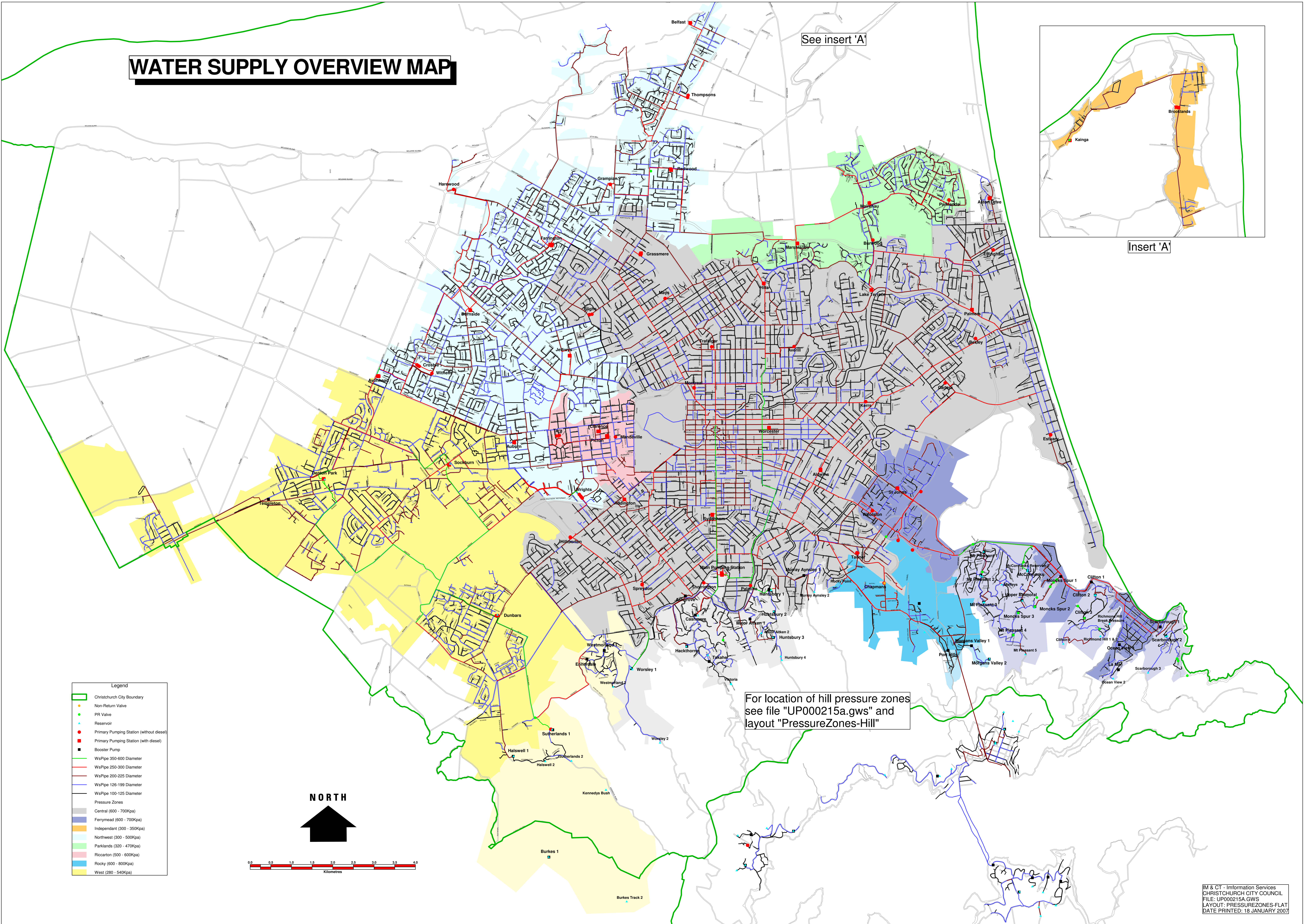


WATER SUPPLY OVERVIEW MAP

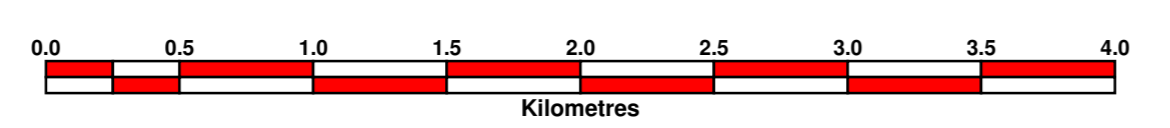
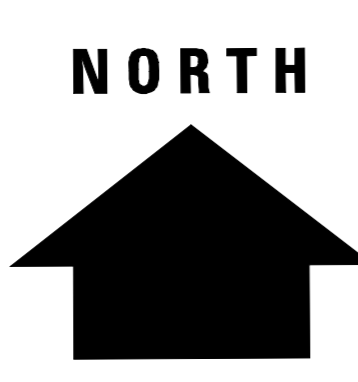
See insert 'A'



Insert 'A'



- Legend**
- Christchurch City Boundary
 - Non-Return Valve
 - PR Valve
 - Reservoir
 - Primary Pumping Station (without diesel)
 - Primary Pumping Station (with diesel)
 - Booster Pump
 - WsPipe 350-600 Diameter
 - WsPipe 250-300 Diameter
 - WsPipe 200-225 Diameter
 - WsPipe 125-199 Diameter
 - WsPipe 100-125 Diameter
 - Pressure Zones
 - Central (600 - 700Kpa)
 - Ferryhead (600 - 700Kpa)
 - Independent (300 - 350Kpa)
 - Northwest (300 - 500Kpa)
 - Parklands (320 - 470Kpa)
 - Riccarton (500 - 600Kpa)
 - Rocky (600 - 800Kpa)
 - West (280 - 540Kpa)



For location of hill pressure zones see file "UP000215a.gws" and layout "PressureZones-Hill"